

DEMOGRAPHIC INFORMATION

 **2.7M**
Total Population
as at October 2025 (est.)

 **3.3%**
Unemployment Rate
as at October 2025

 **11**
of Deposit Taking Institutions
as at December 2025

 **628** (J\$'000)
Real GDP per Capita
for Calendar Year 2024
(Value added at constant prices)

IMPACT INDICATORS

as at December 31, 2025

FINANCIAL ACCESS AND USAGE

 **9.0%**

2025 | Year over Year increase in volume of digital payments

 **10.3%**

2025 | Year over year increase in value of digital payments

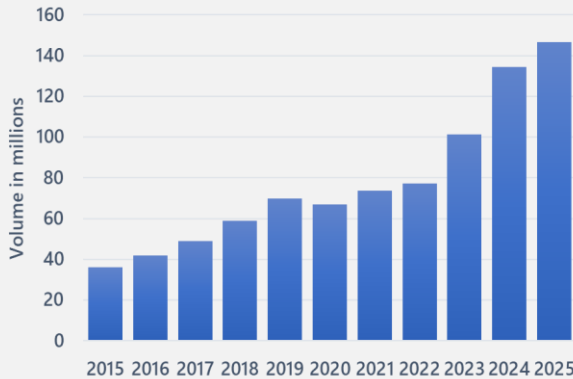
74.2%

2025 | Proportion of the volume of utility bills paid digitally

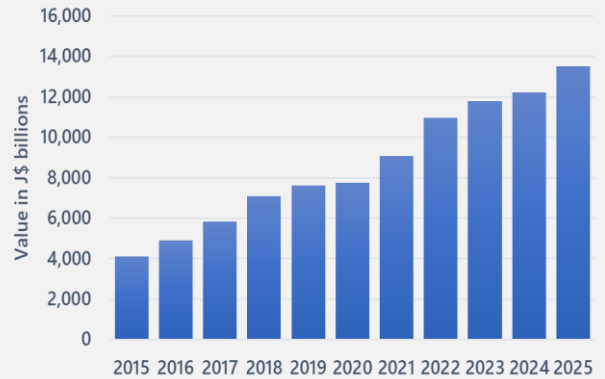
83.0%

2025 | Proportion of the value of utility bills paid digitally

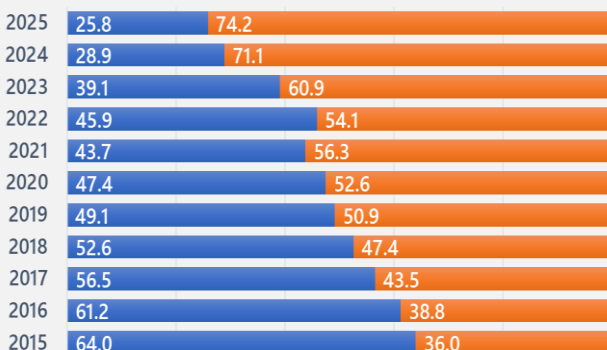
Volume of digital payments. In 2025, there was an increase of 9.0% relative to 2024. Transaction volumes over the period amounted to 146.6 million versus 134.6 million in 2024.



Value of digital payments. In 2025, there was a 10.3% increase in the value of transactions when compared with 2024. The value of transactions over the period amounted to J\$13.5 trillion versus J\$12.2 trillion in 2024.

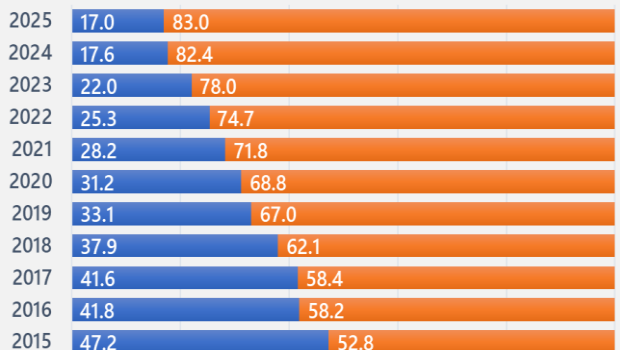


Percentage of utility bills paid via digital vs paper-based. In 2025, there was an increase in the proportion of the volume of utility bills paid digitally to 74.2% when compared to 71.1% in 2024.



■ Paper-based ■ Digital

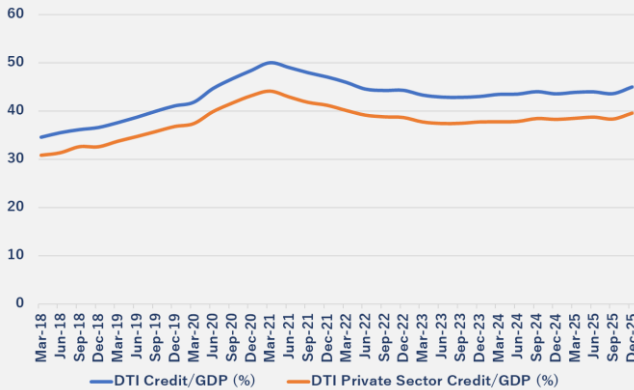
Percentage (value) of utility bills paid via digital vs paper-based. In 2025, there was a marginal increase in the proportion of the value of utility bills paid digitally to 83.0% from 82.4% in 2024.



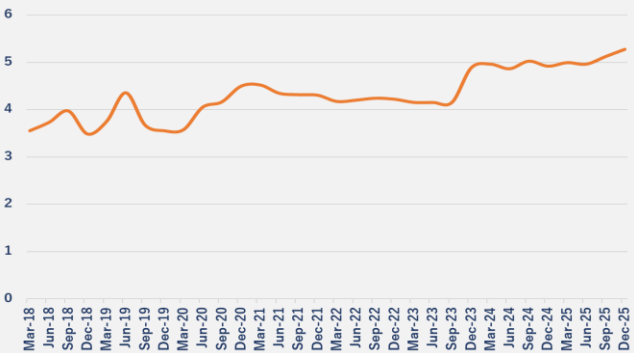
■ Paper-based ■ Digital

FINANCING FOR GROWTH

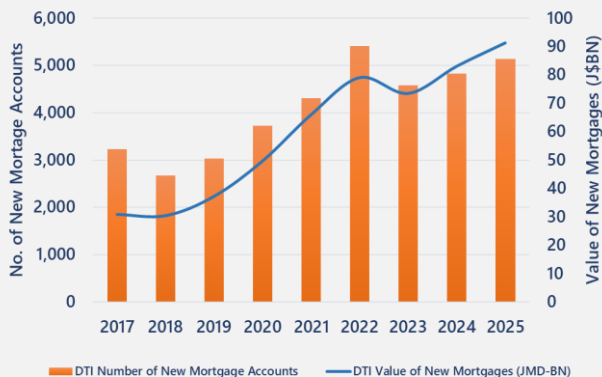
DTI Credit as a % of GDP. As at December 2025, there was a moderate increase from 43.6% to 45.0% when compared with the same period in 2024.



DTI Credit to MSMEs as a % of GDP. As at December 2025, there was an increase in MSME Credit to GDP from 4.9% to 5.3% when compared to December 2024. Year over year, there was an increase in annual credit growth to MSMEs i.e. 11.0% growth versus 5.1% growth in the same period in 2024. There were increases in credit provided to all business sizes amounting to 3.9%, 18.6% and 4.5% for micro, small and medium businesses respectively.



DTI New Mortgages. In 2025, there was a 9.9% increase in the value of new mortgages and a 6.5% increase in the volume of new mortgage loans when compared with 2024.



45.0%

December 2025 | DTI Credit as a % of GDP*

5.3%

December 2025 | DTI Credit to MSMEs as a % of GDP*

5,137

2025 | Number of New Mortgage Accounts



6.5%

2025 | Year Over Year Increase in the Number of New Mortgage Accounts

91.3J\$Bn

2025 | Value of New Mortgage Loans



9.9%

2025 | Annual Growth in the Value of New Mortgage Loans

*GDP Projections used

FINANCIAL RESILIENCE

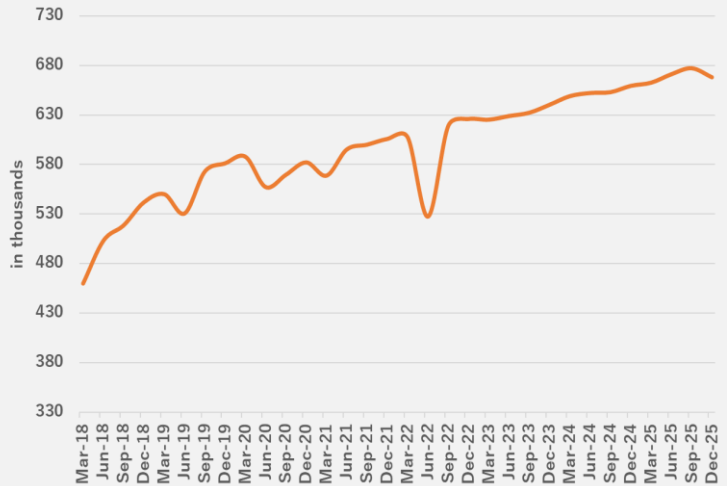
668,000

December 2025 | # of Loan Accounts

↑ 1.3%

December 2025 | Year Over Year Growth

Number of Loan Accounts (DTIs Only). As at December 2025, there was a 1.3% increase when compared to December 2024 i.e. from approx. 659,300 to 668,000 loans. The largest increases in the number of loan accounts were seen in loans extended to local residents i.e. personal loans, and business loans extended to distribution, agriculture, and professional and other business services. There was a marginal increase in loans extended to overseas residents.



4.9Mn

December 2025 | # of Savings Accounts

↑ 6.0%

December 2025 | Year Over Year Growth

Number of Savings Accounts (DTIs Only). As at December 2025, there was a 6.0% increase when compared to December 2024. The movement reflects a net increase of about 8,600.



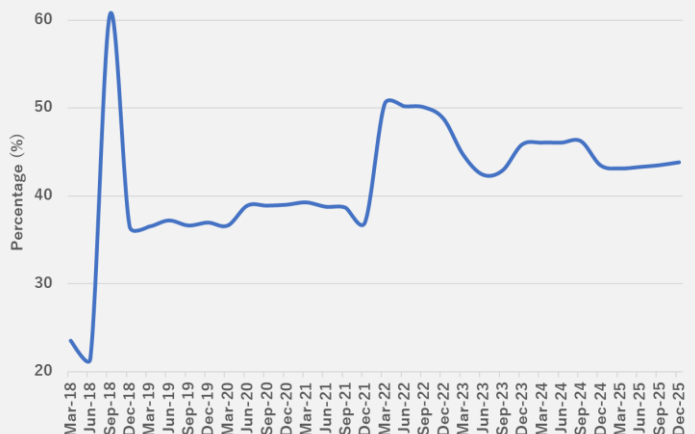
43.8%

December 2025 | % of Dormant Savings Accounts

↑ 0.3ppts

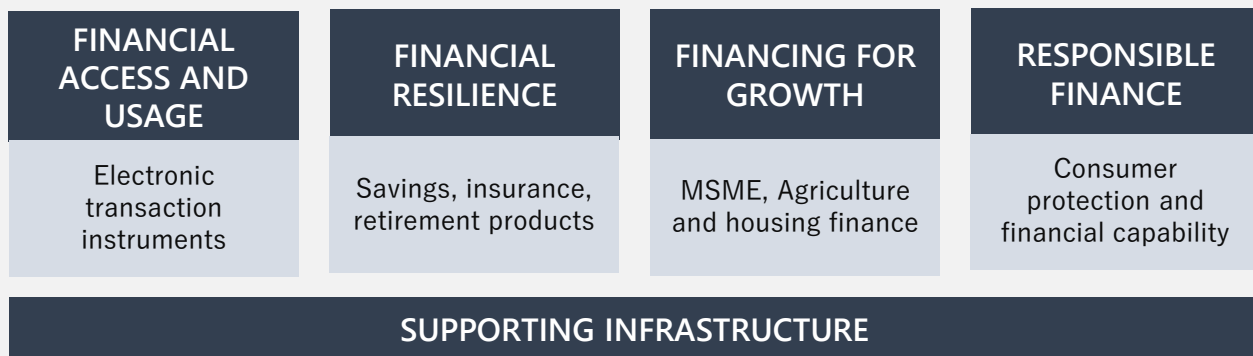
December 2025 | Year Over Year Increase

Percentage of Dormant Savings Accounts. There was a 0.3 percentage point (ppt) increase in the percentage of dormant savings accounts to 43.8% in December 2025 when compared to 43.5% in December 2024.



Note: ppts – percentage points

The National Financial Inclusion Strategy (NFIS) is an agenda of reforms structured around four main pillars and a cross-cutting foundation:



GLOSSARY

Credit..

...refers to loans and advances extended to clients.

Deposit-taking Institutions (DTIs)...

... refers to Commercial Banks, Building Societies and Merchant Banks.

Digital Payments...

...refers to an electronic payment that occurs through digital or online means without the payer or payee physically exchanging cash. The device to initiate the payment includes a computer, a mobile phone, or Point of Sale (POS) device, while the payment instrument includes an e-money product, payment-card product, credit/debit transfer, or other innovative payment products.

Dormant Savings Accounts...

... refers to savings accounts showing no deposit or withdrawal activity (other than posting interest) for a period specified by a DTI not being less than six calendar months.

Mortgage...

... refers to loans granted by the reporting institutions for the acquisition/improvement of real estate.

MSMEs...

... refers to micro, small and medium sized businesses. The definition for this classification are standardised by Jamaica's Ministry of Industry, Investment and Commerce. See *classification [here](#)* (Page 4).

Savings Account...

... refers to interest bearing deposit accounts that are not withdrawable by cheques or held for any fixed period to maturity. Funds can be deposited or withdrawn at will or at the discretion of the account-holding institution.